

Pulsating vacuum pressure steam sterilizer



100L//200L

Preset sterilization Mode

Soild



Rubber



Wrapped



BD test

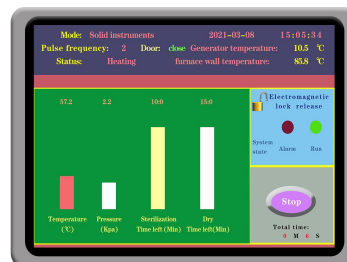


Custom





100L/200L



Electromagnetic lock release 2021-03-08 15:05:16

Code: Please Select Mode The status of door: close

Mode	Temperature (°C)	Pressure (Kpa)	Time (Min)
Solid instruments	10.5	1.2	100
Dressing package	10.5	1.2	100
Rubber	10.5	1.2	100
BD test	10.5	1.2	100
Custom mode	10.5	1.2	100
High-pressure mode	10.5	1.2	100

Vacuum pressure: -73.0 Kpa
Pre-stage pressure: 100.0 Kpa
Pressure limit: 220.0 Min
Dry vacuum pressure: -85.0 Kpa
Liner temperature: 55.0 °C

Back

The status of door: close 2.1 Kpa 2021-03-08 15:04:47

The 14th sterilization

Function	Value
Process monitoring	10.5 °C
Change language	1.2 Kpa
Vacuum test	100 Min
Time setting	150 Min
System setting	2 M 1 S

Process unit : Siemens PLC unit

Color Touch Screen: display parameters and sterilization cycle state, user select the sterilization mode depends on sterile material .

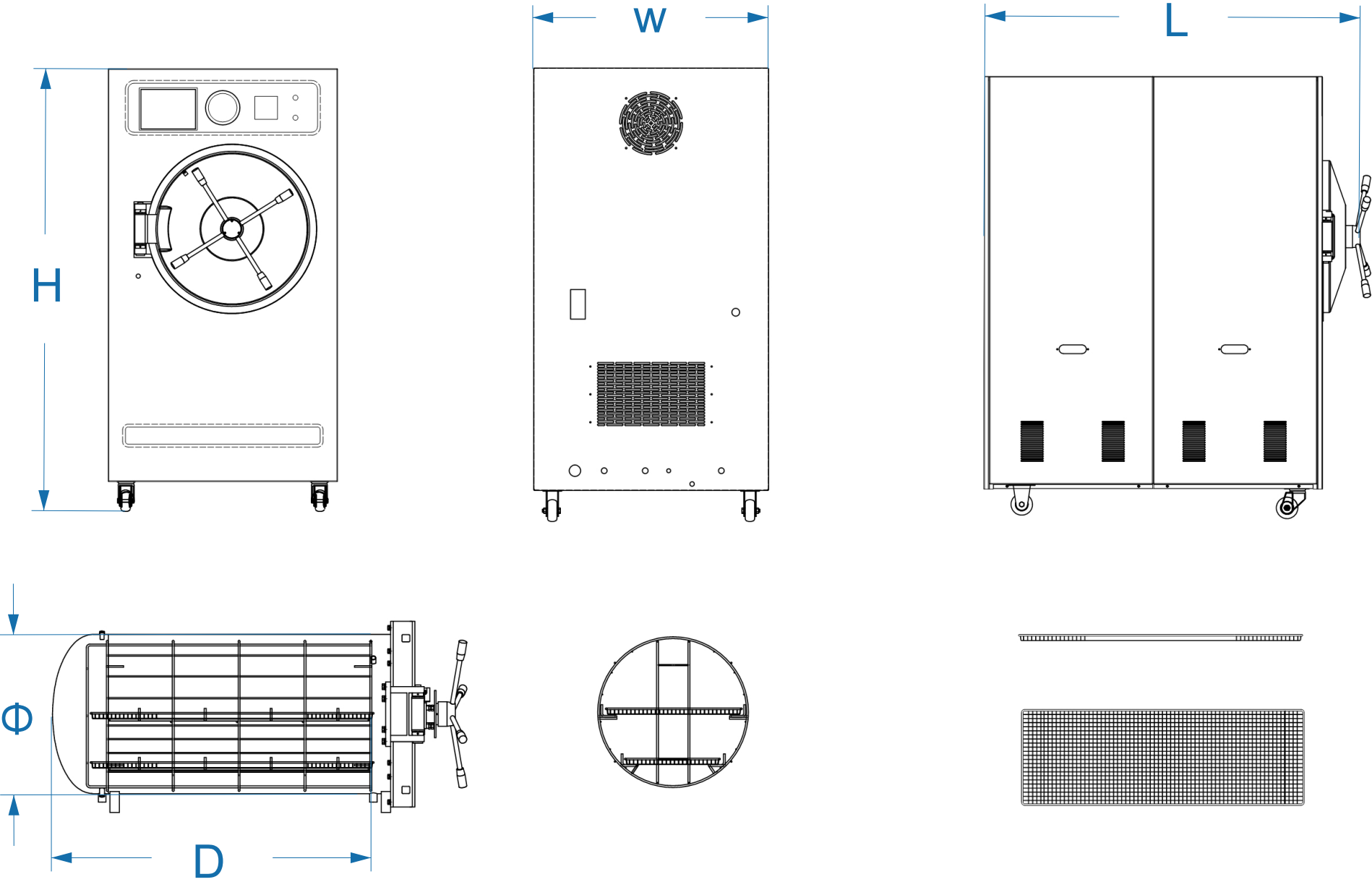
Audible and visual alarms on the screen, of events and process failures.

Muti Sterilization mode

- For rubber/plastic 121 degrees C
- For instruments 134 degrees C
- For textile 134 degrees C
- Standard Bowie dick test
- User defined mode
- Mini thermal printer : print sterilization process timing ,temperature , pressure parameters
- USB port : support load programs and download historical sterilization data through a U-disk .

Control System

Outline sketch



Machine structure

Machine shell: 304 stainless steel , the surface is easy to clean

Sterilization chamber: Horizontal round chamber made of 304 stainless steel, covered with external thermal insulation layer .

Door: Mechanical and electronic double lock .electronic safety interlocks prevent the opening of the door if the chamber under pressure .

Trays : two removable grill in a basket for items load

Built-in electric steam generator. Equipment with water level sensor , when water lack will have a water lack alarm on screen .

Safety protection against over pressure, over temperature.

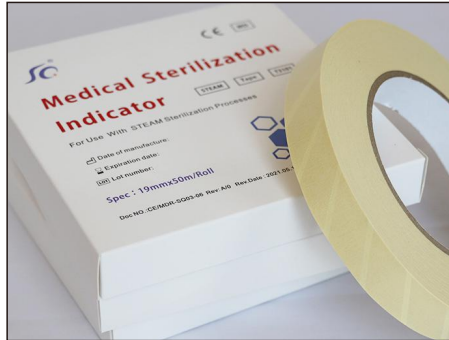
Vacuum pump :water-cooled oil-free vacuum pump ,fast vacuum speed, free maintenance .

Pipe lines : stainless steel pipe lines for water and steam

Technical information

Model	SD-VSA100	SD-VSA200
Voltage	AC 380V , 50 HZ	AC 380V , 50 HZ
Power	15KVA	18KVA
Machine size	1150X770X1520mm	1360X810X1580mm
Chamber size	Φ420X700mm	Φ500X1000mm
Volume	100L	200L
Material	304 stainless steel	304 stainless steel
Shelves(trays)	Two shelves	Two shelves
Weight	308KG	363KG
Working pressure	210Kpa-230Kpa	210Kpa-230Kpa
Working temperature	121℃-134℃	121℃-134℃
Pre-set mode	5	5
Display screen	7' color LCD	7' color LCD
Steam generator	Built -in	Built-in
Data export	Yes	Yes
Mini printer	Yes	Yes
Low water level alarm	Yes	Yes
Drying method	vacuum drying inside chamber after sterilization	vacuum drying inside chamber after sterilization

Supporting supplies



STEAM indicator tape



STEAM sterilization pouch



STEAM indicator strip



STEAM biological indicator



Biological Indicator Incubator



Heat sealing machine